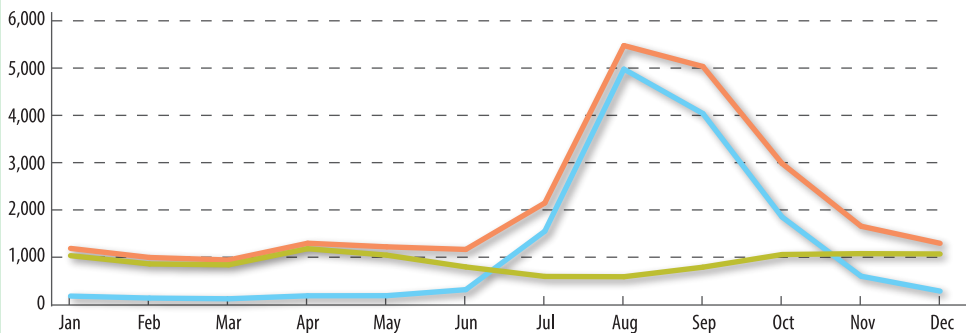
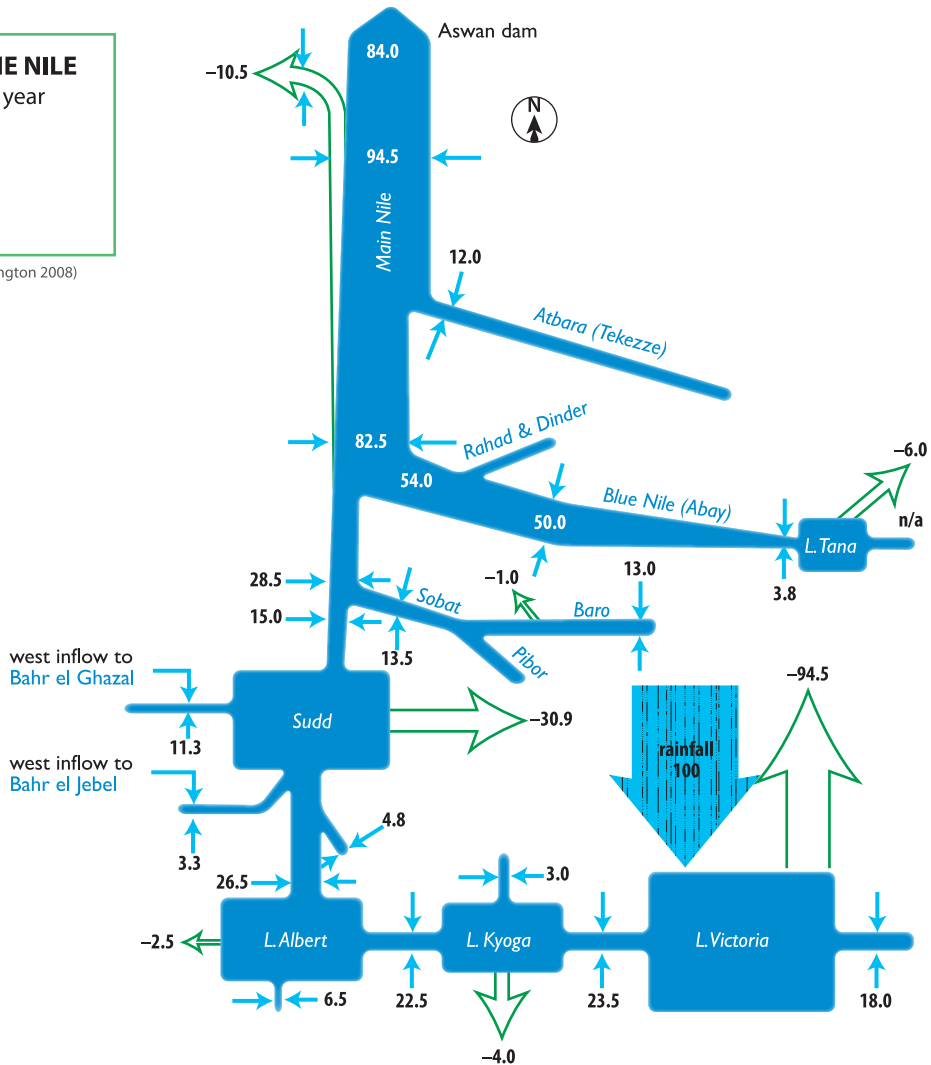


## TOTAL FLOWS OF THE NILE billion cubic metres per year

- █ river flow
- ← inflows
- ⇨ evaporative losses

(Source of data: Blackmore and Whittington 2008)



## NILE FLOWS

Average monthly flow, cubic metres per second

- White Nile at Mogren 1962-88
- Blue Nile (Abay) at Khartoum 1962-88
- Main Nile at Tamaniat 1962-90

(Source of data: NBI WRPM Project 2012)